



**North Yorkshire  
County Council**

## **Agenda**

**Meeting: Young People's Overview & Scrutiny  
Committee**

**Venue: Brierley Room, County Hall,  
Northallerton DL7 8AD  
(see location plan overleaf)**

**Date: Friday, 24 March 2017 at 10am**

Recording is allowed at County Council, committee and sub-committee meetings which are open to the public, please give due regard to the Council's protocol on audio/visual recording and photography at public meetings, a copy of which is available to download below. Anyone wishing to record is asked to contact, prior to the start of the meeting, the Officer whose details are at the foot of the first page of the Agenda. We ask that any recording is clearly visible to anyone at the meeting and that it is non-disruptive. <http://democracy.northyorks.gov.uk>

### **Business**

1. **Minutes of the meeting held on 16 December 2016.**

**(Pages 5 to 8)**

2. **Declarations of Interest**

4. **Public Questions or Statements.**

Members of the public may ask questions or make statements at this meeting if they have given notice Ray Busby of Policy & Partnerships (*contact details below*) no later than midday on Tuesday 21 March 2017, three working days before the day of the meeting. Each speaker should limit themselves to 3 minutes on any item. Members of the public who have given notice will be invited to speak:-

- at this point in the meeting if their questions/statements relate to matters which are not otherwise on the Agenda (subject to an overall time limit of 30 minutes);
- when the relevant Agenda item is being considered if they wish to speak on a matter which is on the Agenda for this meeting.

Enquiries relating to this agenda please contact Ray Busby **Tel: 01609 532655**  
**Fax: 01609 780447** or email [ray.busby@northyorks.gov.uk](mailto:ray.busby@northyorks.gov.uk)  
Website: [www.northyorks.gov.uk](http://www.northyorks.gov.uk)

*Suggested timings*

5. **Youth Justice Service** – Presentation by Julie Firth, Head of Prevention Services 10-10.50am
6. **Closing the Gap – Presentations** 11am-12noon
- a) Data outcomes update - Kirsty Hallett, Lead Adviser, Standards and Research
  - b) Achievement Unlocked Report (to follow) - Katharine Bruce, Lead Adviser - Vulnerable Learners
  - c) Sowerby School presentation - Keeley Ungerechts (Headteacher, Sowerby Community Primary School)
  - d) Update on SEND priorities /SEND task group - Wendy Jemison (Lead adviser SEND)
  - e) Scarborough Opportunities - Paul Brennan, Assistant Director
- 7 **Work Programme** – Report of the Scrutiny Team Leader. 12noon-12.15pm
- (Pages 9 to 20)**
- 8 **Other business which the Chairman agrees should be considered as a matter of urgency because of special circumstances.**

Barry Khan  
Assistant Chief Executive (Legal and Democratic Services)

County Hall  
Northallerton

16 March 2017

**NOTES:**

**Emergency Procedures for Meetings**

**Fire**

The fire evacuation alarm is a continuous Klaxon. On hearing this you should leave the building by the nearest safe fire exit. From the **Grand Meeting Room** this is the main entrance stairway. If the main stairway is unsafe use either of the staircases at the end of the corridor. Once outside the building please proceed to the fire assembly point outside the main entrance

Persons should not re-enter the building until authorised to do so by the Fire and Rescue Service or the Emergency Co-ordinator.

An intermittent alarm indicates an emergency in nearby building. It is not necessary to evacuate the building but you should be ready for instructions from the Fire Warden.

**Accident or Illness**

First Aid treatment can be obtained by telephoning Extension 7575.

# Young People Overview and Scrutiny Committee

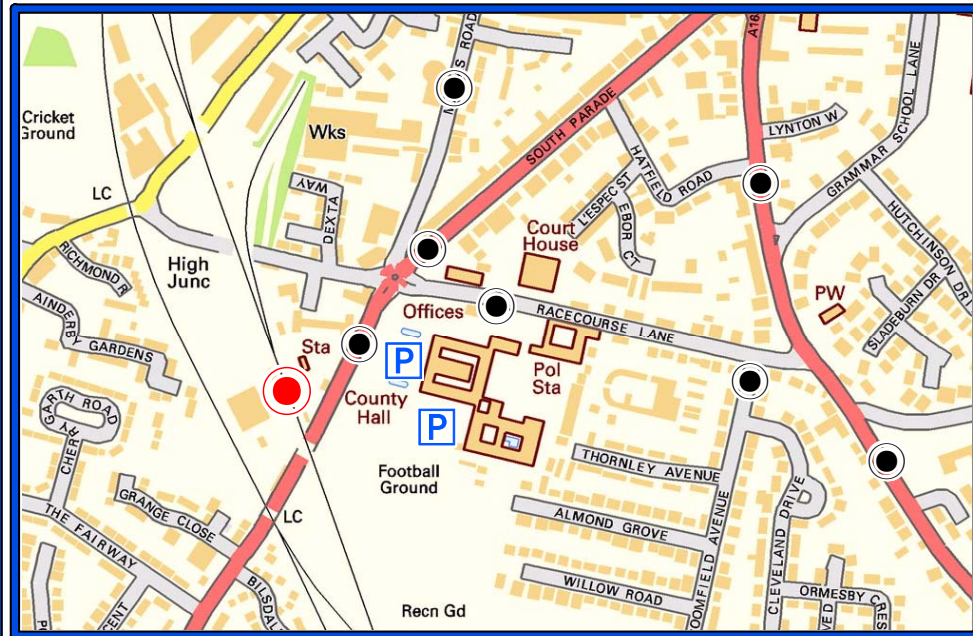
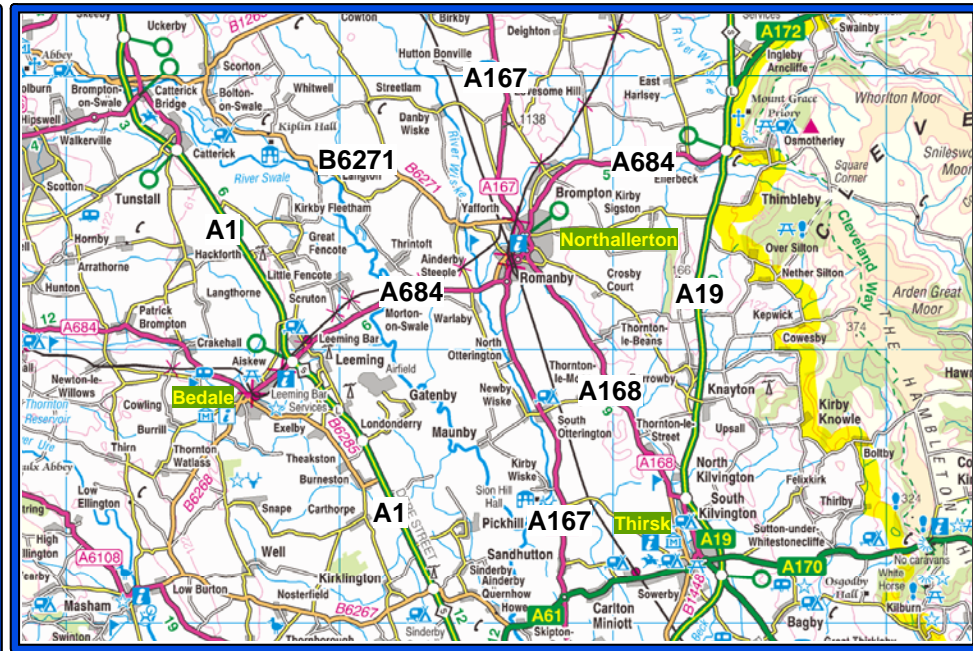
## 1. Membership

<b>County Councillors (13 )</b>							
	<i>Councillors Name</i>	<i>Chairman/Vice Chairman</i>	<i>Political Group</i>	<i>Electoral Division</i>			
1	ARNOLD, Val		Conservative				
2	BACKHOUSE, Andrew		Conservative				
3	BURR, Lindsay MBE		NY Independent				
4	CASLING, Liz		Conservative				
5	DICKINSON, Caroline		Conservative				
6	IRETON, David		Conservative				
7	JEFFELS, David		Conservative				
8	JEFFERSON, Janet	Chairman	NY Independent				
9	LUNN, Cliff		Conservative				
10	PLANT, Joe	Vice Chairman	Conservative				
11	RITCHIE, John		Labour				
12	SHIELDS, Elizabeth		Liberal Democrat				
13	TROTTER, Cliff		Conservative				
<b>Members other than County Councillors – ( ) Voting</b>							
	<i>Name of Member</i>	<i>Representation</i>					
1	RICHARDS, Graham	Church of England					
2	VACANCY	Non-Conformist Church					
3	CRABTREE, Pam	Roman Catholic Church					
4	CAVELL-TAYLOR, Dr Tom	Parent Governor					
5	NOOT, Jeremy	Parent Governor					
6							
<b>Non Voting</b>							
1	BIRCUMSHAW, Paul	Secondary Teacher Representative					
2	ALDER, Louise	Primary Teacher Representative					
3	HILLS, Simon	Voluntary Sector					
4	SHARP, David	Voluntary Sector					
<b>Total Membership – ( )</b>				<b>Quorum – (4)</b>			
Con	Lib Dem	Ind	Labour	Liberal	UKIP	Ind	Total
9	2	1	1	0	0	0	13

## 2. Substitute Members

<b>Conservative</b>		<b>Liberal Democrat</b>	
	<i>Councillors Names</i>		<i>Councillors Names</i>
1	ENNIS, John	1	GRIFFITHS, Bryn
2	MARSDEN, Penny	2	
3	BLADES, David	3	
4	WINDASS, Robert	4	
5		5	
<b>NY Independent</b>		<b>Labour</b>	
	<i>Councillors Names</i>		<i>Councillors Names</i>
1	GRANT, Helen	1	RANDERSON, Tony
2		2	
3		3	





Visitor Parking  
at County Hall



Northallerton National  
Rail Station



Bus Stops

### County Hall

Northallerton  
North Yorkshire  
DL7 8AD

Tel : 0845 8 72 73 74



North  
Yorkshire County Council

## North Yorkshire County Council

### Young People Overview and Scrutiny Committee

Minutes of the meeting held on 16 December 2016 at 10.45 am at County Hall, Northallerton.

**Present:** County Councillor Janet Jefferson in the Chair.

County Councillors: Val Arnold, Caroline Dickinson, David Ireton, David Jeffels, Cliff Lunn, Joe Plant, John Ritchie, Elizabeth Shields and Cliff Trotter.

Co-opted Members: Paul Bircumshaw (Secondary Teacher representative), David Sharp (Voluntary Sector).

In attendance:

Executive Members: County Councillors Arthur Barker and Janet Sanderson

Officers: Ray Busby (Corporate Development Officer (Central Services)). Katharine Bruce (Lead Adviser - Vulnerable Learners, Education and Skills (CYPS)), Pete Dwyer (Corporate Director of CYPS) and Simon Moss (Strategic Analyst, Strategy and Commissioning (CYPS))

Apologies for absence were received from: County Councillors Lindsay Burr MBE and Liz Casling. Pam Crabtree (Roman Catholic Church representative), Jeremy Noot and Dr Tom Cavell-Taylor (Parent Governor Representatives), Louise Adler (Primary Teacher representative). Simon Hills (Voluntary Sector).

#### Copies of all documents considered are in the Minute Book

#### 99. Minutes

##### Resolved –

That the Minutes of the meeting held on 30 September 2016 having been printed and circulated be taken as read and be confirmed and signed by the Chairman as a correct record.

#### 100. Any Declarations of Interest

There were no declarations of interest to note.

#### 101. Public Questions

The Committee was advised that no notice had been received of any public questions or statements to be made at the meeting.

#### 102. Planning for Future Committee Items

Considered –

Ray Busby explained that the committee has added two items to its work programme - Early intervention in Schools on Drugs and Alcohol, and Young People and Hospital

Admissions - but had not had the opportunity to decide the direction this review work might take. The two presentations outlined Group Spokespersons' thoughts.

### **i) Early Interventions in Schools on Drugs and Alcohol**

Ray Busby highlighted School responsibilities for these three areas (Drugs, alcohol, Tobacco which are in part the same (especially awareness, education and prevention, but can be quite different (especially intervention and treatment).

#### **Resolved –**

- a) It was agreed that group spokespersons now consider how best to undertake this work.
- b) The planned scope to cover the following:
  - The emphasis of the work would be on personal health concerns
  - The key focus to be on early identification and assessment of young people (11 and 18), looking at assessment procedures used to establish the degree of risk, and possibly the treatment pathway
  - Effective processes for supporting pupils with additional needs relating to alcohol and drugs and referring them to external services where appropriate
  - Are services and interventions designed to engage and retain young people and respond to their needs? Are they in keeping with recognised Practice Standards?
  - Effectiveness of inter-agency working and whether there were any gaps, inconsistencies or variations in the processes used by the agencies involved
  - Reference this work, and test against, high level, strategic commitment and co-ordination

### **ii) Young People and Hospital Admissions**

Group Spokespersons suggested that the committee could focus on common mental health problems including phobias, depression, anxiety, obsessive compulsive disorder and panic disorder. So, it was reasonable to concentrate on the causes of “potentially avoidable” admissions, not, in isolation, the causes for mental health. Taking this approach would most likely encompass, for example:

- Eating disorders
- Self-harm
- Substance use

Members agreed that more work was needed on understanding the issue before an informed decision could be made on how best to go about the work.

#### **Resolved -**

That group spokespersons research the issue further before reporting back to the committee.

## **103. Growing up in North Yorkshire**

Considered -

The report and presentation by the Corporate Director - Children and Young People's Service.



The Chairman thanked Pete Dwyer and his staff for ensuring that the committee was able to review the results of the Growing Up in North Yorkshire Survey Report before this year's publication date. Meeting this deadline had obviously meant putting in considerable extra effort to get the analysis completed in so short a time, without, the Chairman added, losing any of the high level of quality of interpretation seen on previous occasions.

As far as scrutiny is concerned, being able to review it before it was published meant that we could take a view on the rigour of the survey process, how the results had been analysed, and receive reassurance that the potential of the findings to help children and young people and the services that support them, is being used to the greatest possible extent.

Katharine Bruce explained that there was 100% participation rate of all local authority maintained secondary schools with the majority of secondary school academies taking part (10/12). Primary school uptake was similar to 2014, and it was pleasing to see the increased uptake of Special Schools.

Members liked the introduction in the 2016 survey of an increased focus on risk taking behaviours, including additional questions on online safety, use of e-cigarettes and healthy relationships. Also useful, and informative, is the broadening of the approach to reporting to include a specific focus on outcomes for 'Disadvantaged pupils' in every report where sample size permits.

Katharine Bruce took members through the report, Simon Moss adding comments by way of a presentation. Members particularly noted the following emerging trends which the committee took particular note of.

- a) the identified priorities from 2014 remain the same:
  - Developing Resilience and Emotional Wellbeing
  - Pupil Voice influencing decisions
  - Positive Ethos and Culture of School
  - Risky Behaviours including those related to use of modern technologies
- b) Transition at KS2/3 has improved, but Careers Guidance and post-16 transition remain a priority. The Key Stage One results are very similar to the previous questionnaire in 2014
- c) The Key Stage Two results show continued improvements in the percentage who don't drink energy drinks (up from 50% in 2012 to 60% in 2014 to 69% in 2016), however the percentage who do not drink alcohol has decreased slightly (48% in 2012, 83% in 2014 and 75% on 2016).
- d) There are positive trends around internet safety, with 8% responding they communicate online with people they don't know (13% in 2014). 30% say they are never supervised when using the internet (33% in 2014). 74% of pupils say they found school lessons on internet safety 'quite' or 'very' useful.
- e) At Key Stage Four there has been a continued improvement in the situation regarding alcohol with a higher percentage reporting that they never drink alcohol (up from 31% in 2012 to 43% in 2014 and 46% in 2016), a decrease in the percentage who had been given alcohol by a friend in the week preceding the questionnaire (down from 10% in 2012 to 6% in 2014 to 4% in 2016), and a decrease in the percentage who had drunk alcohol in the week preceding the questionnaire (down from 31% in 2012 to 24% in 2014 to 20% in 2016).

- f) There has been an improvement in some of the questions around bullying and negative behaviour with pupils now less likely to say they have experienced negative behaviour during lesson time in the month before the survey (23% in 2014, 17% in 2016) and the percentage experiencing negative behaviour outside school decreasing from 26% to 20%.
- g) There are some positive trends around internet safety, with secondary pupils are less likely now to communicate with people they have met online and don't know in real life (22% in 2014, 18% in 2016).
- h) There has been an apparent increase in the reporting of bullying or aggressive behaviours within dating relationships among Y10 pupils. 4% said they were experiencing aggression in their current relationship, while 22% said they had with a previous boy-/girl-friend; the figures for 2014 were 3% and 20%.
- i) The survey results on "Closing the Gap" were illuminating, especially as this has featured on the committee's work programme on number of occasions over recent years and will be part of a report to our next meeting.
- j) Compared to the rest of Year 6:
  - Disadvantaged children are more likely to have lower wellbeing scores, be bullied and to worry about school and less likely to do 7+ hours of exercise a week.
  - SEN and pupils with disabilities are more likely to be bullied at school and worry about their health
- k) Compared to the rest of Year 10:
  - Disadvantaged children were less likely to intend to go to University and more likely to be bullied, skip breakfast, be absent from school, smoke and be a victim of crime/violence.
  - Armed forces pupils were more likely to have been offered drugs and to be sexually active.

**Resolved -**

That the report and presentation be noted.

**104. Work Programme**

Considered -

The report of the Scrutiny Team Leader inviting comments from Members on the content of the Committee's Programme of Work scheduled for future meetings.

**Resolved -**

That the content of the Work Programme report and the Work Programme schedule are noted.

The meeting concluded at 12.30pm

RB



**North Yorkshire County Council****Young People Overview and Scrutiny Committee****24 March 2017****Work Programme****1.0 Purpose of Report**

- 1.1 This report asks the Committee to confirm, amend or add to the list of matters shown on the work programme schedule (attached at Appendix 1).

**2.0 Work Programme Schedule**

- 2.1 The Work Programme Schedule is attached at Appendix A

**3.0 Mid Cycle Briefing Discussion**

- 3.1 Your chairman and group spokespersons have met once since the last meeting about the make-up of the work programme.
- 3.2 Last year, the committee overhauled its work programme, moving away from agendas that seemed, at times, a mini re-run of Executive member business. The aim was to be more outward looking, more thematic with a stronger emphasis on evaluating outcomes.
- 3.3 Whilst wanting to devote more attention to "assurance" work, lead members have stressed that it is the impact on outcomes and performance which is of most interest, rather than (just) directorate compliance.
- 3.4 Whilst not wanting to tie the hand of what will be a changed committee after May - at least in terms of membership – group spokespersons agreed it would be good to settle on some big themes to help structure and plan business for the next eighteen months. See diagram attached (Appendix 2).

**4.0 Exclusions Item**

- 4.1 Group spokespersons also agreed a brief/line of enquiry for the Exclusions item which will be the main topic at your next meeting. A draft is attached (Appendix 3)
- 4.2 Nick Frost, Chair of the Safeguarding Children Board has accepted the invitation to attend your meeting on the 8 September 2017 to present the Board's Annual Report. We have agreed, however, to broaden the item out much more, using the annual report as the centrepiece for a wider dialogue about partnership commitment and activity, and more generally about how we keep North Yorkshire's children safe. There is a Centre for Public Scrutiny guide that is well worth using for this exercise (<http://www.cfps.org.uk/safeguarding-children-practical-guide-os-councillors/>)
- 4.3 I've attached an extract - the key scrutiny questions part - for ease of reference (Appendix 4).

**5.0 Recommendation**

- 5.1 The Committee is asked to confirm, comment or add to the areas of work listed in the Work Programme schedule.

DANIEL HARRY  
SCRUTINY TEAM LEADER  
County Hall,  
Northallerton

Author and Presenter of Report: Ray Busby

Contact Details: Tel: 01609 532655

E-mail: [ray.busby@northyorks.gov.uk](mailto:ray.busby@northyorks.gov.uk) 8 December 2016 Background Documents Nil

## YOUNG PEOPLES OVERVIEW AND SCRUTINY COMMITTEE

### **Scope**

The Council's corporate organisation and structure, resource allocation, asset management, procurement policy, people strategy, equality & diversity, performance management, communication and access to services.

Partnership working, community development, community engagement, community strategies and community safety. This Committee shall be the Crime & Disorder Committee for the purposes of Part 3 of the Police and Justice Act 2006.

### **Meeting Details**

Committee Meetings	Friday, 24 March 2017 at 10.30am
	Friday, 9 June 2017 at 10.30am
	Friday, 8 September 2017 at 10.30am
	Friday 8 December 2017 at 10.30am
	Friday 9 March 2018 at 10.30am
Mid Cycle Briefings	Friday 10 February 2017 at 10.30am
	Friday 21 April 2017 at 10.30am
	Friday 21 July 2017 at 10.30am
	Friday 20 October 2017 at 10.30am
	Friday 19 January 2018 at 10.30am

**Programme**

Friday 24 March 2017			
SUBJECT	AIMS/PURPOSE	COMMENTS	LEAD
Resilience of outcomes/improvement Closing the Gap in Educational Achievement	Having looked at this topic last year, Committee agreed to follow up developments, assess progress. How young people are supported to meet their needs and aspirations. How residents learn throughout their lives, are skilled and ready for Employment and fulfil their potential.	Essentially, are the objectives of the strategy being met? Concentration especially on SEND Dialogue with school representatives	Paul Brennan Katherine Bruce CYPS
Youth Justice Review	The work, and future, of the Youth Justice System. What works to prevent youth crime and rehabilitate young offenders, and how this is applied in practice; how the youth justice system interacts with wider services for children and young people; and whether delivery models and governance arrangements remain fit for purpose and achieve value for money.	Dialogue with operational managers	Pete Dwyer Julie Firth
Friday 9 June 2017			
SUBJECT	AIMS/PURPOSE	COMMENTS	LEAD
School Admissions - status	How work under diversified schools governance. Our admission procedures now and how we expect them, and schools and MAT's attitudes to them, to change. How place allocations are made;	Focus on an account of the customer experience	William Burchill CYPS
School exclusions	Prevalence, profile and role of local authority. How do we respond, what are the support arrangements, how is the picture changing		Cerys Townend, Jane Le Sage

Traded Services	The status, future and effect on traded services of recent and planned changes in educational provision.	Possibly looking at the range of services being provided, whether "traded" or otherwise, and how the pattern of services are likely to change in the future	Anton Hodge Lesa Brown
Friday 8 September 2017			
SUBJECT	AIMS/PURPOSE	COMMENTS	LEAD
Safeguarding	Chairman of Childrens Safeguarding Board presents Annual report. Dialogue about commitment of partners to Safeguarding agenda.	Possibly part of a wider consideration of safeguarding.	Nick Frost
Place planning. Shaping future education provision	Our projections about need/demand and how the LEA shapes/influences provision. Working with the schools commissioner	Possibly linked to admissions analysis and understanding of exclusions	Pete Dwyer Paul Brennan
Roles and Responsibilities of Parent Governors	The changing role of governors and their responsibilities for performance. What is the picture regarding effective governance and the extent to which schools are transparent and open about their decision making? How the local authority provides training and support, information and clerking services. With whom do councillors, as community leaders in particular, need to work.	There is a desire to understand better the new lines of accountability: How can we be sure about the integrity of financial information and the robustness of controls and risk management; are governance arrangements ensuring that school bodies, governors in particular, are applying appropriate values and exhibiting appropriate behaviour.	Paul Brennan Stuart Boothman Alison Johnston
Hospital Admissions	Especially mental health services support for young people, managing cases in the community. The contribution of inappropriate placements and/or insufficient community resources.	Possibly then followed up by a series of discussions with key health personnel on causes of admission, substance abuse, self-harm, eating disorders etc.	Emma Thomas Julie Firth

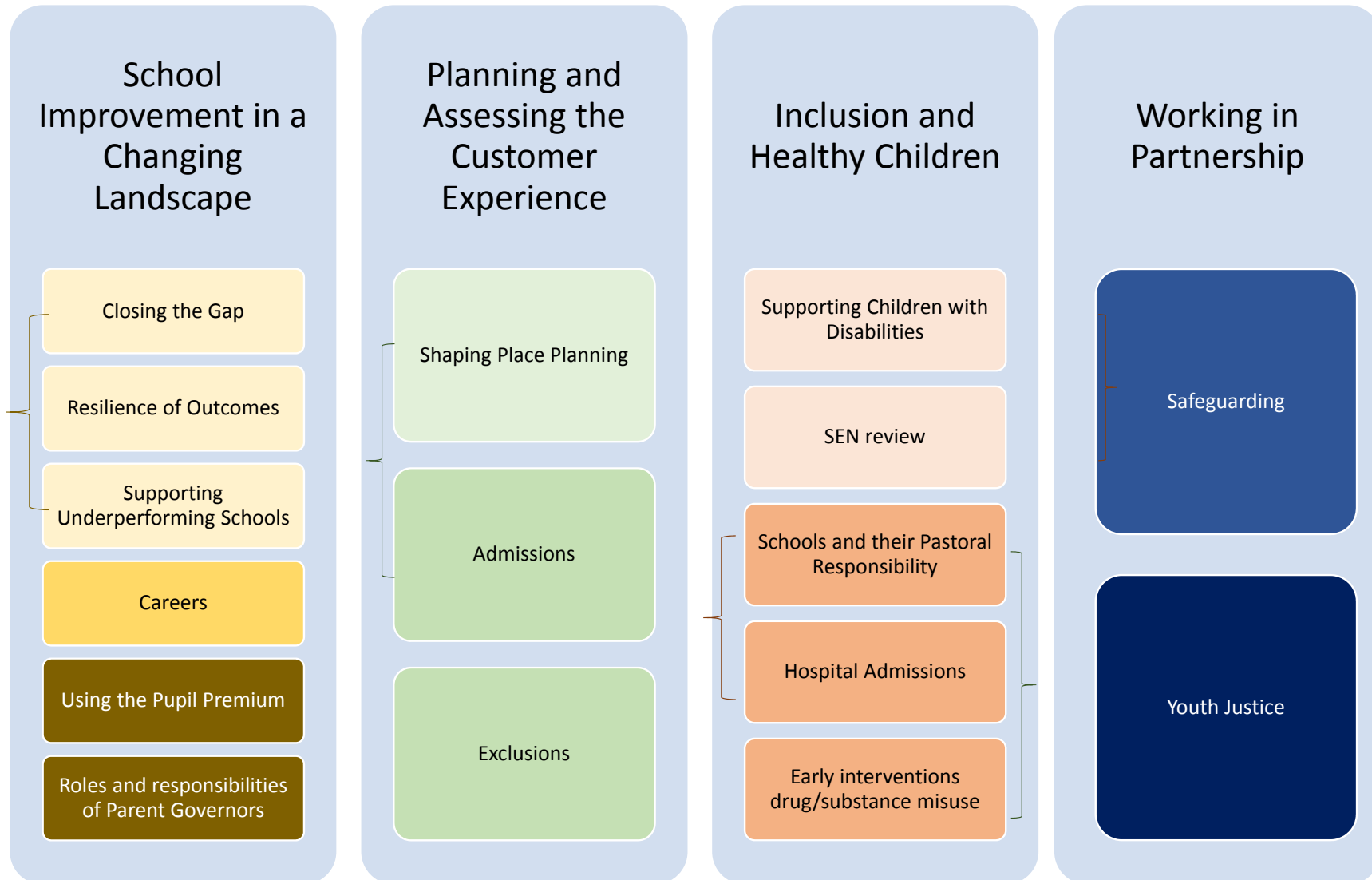


Friday 8 December 2017			
Early Intervention in Schools on Smoking, Drugs, Alcohol	Preventing drug, alcohol and tobacco use in young people and interventions for those already experiencing harm.	Possible focus on commissioning - is it integrated across prevention and specialist interventions and the wider children's agenda	Katie Needham Emma Thomas Julie Firth
Supporting Underperforming Schools - especially those in Special Measures	How does the authority address its statutory requirements such as: requiring schools to "enter into arrangements", specified support; appoint additional governors; suspend delegated budget.		Paul Brennan
Pupil Premium	An understanding of local practices and what works best and comparing local schools' application of the funding and schools in other councils. Outcomes - which children appear to be benefitting. Do all schools comply with their statutory obligations with regards to publication	Challenging the use of the pupil premium.	

### **Mid Cycle Briefing Items**

Date	Probable Item
Friday 21 April 2017	Keeping Children Safe in North Yorkshire
	Prevention Strategy - informal review of current position
	Planning for items before the June Committee meeting <ul style="list-style-type: none"> <li>• School Admissions - status</li> <li>• School exclusions</li> <li>• Roles and Responsibilities of Parent Governors</li> </ul>
21 July 2017	Short Breaks Implementation of changes - 1 year review
	Planning for items before the September Committee meeting <ul style="list-style-type: none"> <li>• Supporting Underperforming Schools - especially those in Special Measures</li> </ul>

Date	Probable Item
	<ul style="list-style-type: none"><li data-bbox="801 240 1055 268">• Pupil Premium</li><li data-bbox="801 280 1039 308">• Safeguarding</li><li data-bbox="801 320 1653 347">• Early Intervention in Schools on Smoking, Drugs, Alcohol</li></ul>



## YOUNG PEOPLES OVERVIEW AND SCRUTINY COMMITTEE

Friday 9 June 2017 at 10am in the Brierley Room at County Hall, Northallerton

### Exclusions Item Initial draft thoughts on scope

#### Remit of Committee

The interests of young people, including education, care and protection and family support.

#### Membership

A list of the committee members is attached.

#### Outline of Session

The meeting, which will be in public, is in the Brierley Room at County Hall. The Chairman wants this to be part information giving (report/presentation etc,) but mainly informal (dialogue/question and answer session). We have about 45-60 mins on the 9 June, a bit longer if needs be.

There will be an opportunity for an informal discussion with lead members at their Mid Cycle Briefing on the 21 April 2017 about how best to approach the topic at the Committee meeting on the 9 June 2017.

#### Scope of item

Exclusions is one of the four thematic areas the committee has chosen to look at over the course of the next 12-18 months. Although the topic falls under the theme "Assessing the customer experience", it also comes under the other general scrutiny themes of "Inclusion" and "School Improvement in a changing landscape".

Whilst members have mentioned their keenness to learn how parents and pupils are supported during the process (access to support and information and so on) I know some members are now just as interested in trends and profile, and especially in how school approaches to exclusions can be affected by changes in status (ie academisation) and when the school is under pressure to improve.

I am aware that there could be some sensitivities about the release of some information – that relating to specific schools, for example - that may need to be observed. I'm also aware that the level of Exclusions - particularly fixed term exclusions - is under the microscope at the moment at leadership level. It may be that there is a need (because of the requirements around consultation processes, say) to be circumspect about what exactly can be shared and in what level of detail.

The following is a starter for ten in terms of scope. These can be addressed in the briefing/presentation and/or in the Q and A discussion.

### ***What is the position on school exclusions***

Contextual information about what an exclusion is, statutory frameworks, relevant guidance, current thinking and policy

NY profile of pupils excluded - Prevalence, profiles and trends

Exclusions by reasons - statistically, why pupils are excluded

Distribution of exclusions.

### ***Factors (Student, School (characteristics), family, Neighbourhood, School) Associated with Exclusions and an understanding of their complexity***

- Is exclusion seemingly applied disproportionately to certain groups of students, if so, why is that?
- Exclusions and Special Educational Needs – context and significance of that
- Impact of neighbourhood and environment - Deprivation.
- Relating to type of school - comparing Academies with Local Authority (LA)
- How is the picture changing as a result of diversification in the school governance – greater autonomy and independence from the authority?
- School performance, league tables, OFSTED judgements
- Just because exclusions and their application may be statistically unequal (by whatever factor), does that mean they are unfair?

***What are the support arrangements*** - for pupil, for parents (support and information and guidance) for school (pre and post exclusion?)

### ***Why some schools exclude more than others***

Are some schools more likely to exclude - why is that?

### ***What happens when pupils are excluded***

How do we respond?

Pupil referral mechanisms and provision

Outcomes for pupils who have experienced a period of exclusion from school.

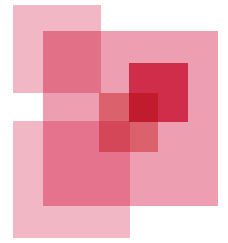
### ***What is/can be done to reduce the rate of pupil exclusions?***

What can the authority do and what is it doing - a look at some of the current initiatives.

Encouraging more consistent application of support and disciplinary procedures?

Prevention agenda





## Key Scrutiny Questions for Safeguarding

---

1. What level of challenge is there in local safeguarding arrangements?
2. How are those in leadership roles for local safeguarding arrangements held to account by the wider system?
3. How do local commissioning arrangements, strategies and frontline services for children and families take into account the latest safeguarding guidance?
4. How aware are different organisations and practitioners about their roles in the local safeguarding process?
5. How are local commissioners considering safeguarding issues in their work across a full range of local services?
6. How effective are 'early help' strategies in identifying children in need and addressing factors that may lead to concerns about safeguarding?
7. What has been learnt from early intervention approaches in the local area? What is effective and what are the resource implications?
8. Does the local area have a range of effective and evidence based services in place to assess and meet the needs of local children and their families?
9. Are local assessments of need effective in ensuring children and their families are able access early support and services to reduce risk and meet needs? How effective is access to these services in preventing potential safeguarding interventions?
10. How effective has the LSCB been in monitoring and challenging the effectiveness of local safeguarding arrangements? What evidence is there that this challenge has led to changes in these arrangements and local working practices and relationships?
11. How effective is the LSCB Local Learning and Improvement Framework in sharing lessons from experience and driving service quality and development?
12. How does the LSCB systematically ensure that the voice and feedback of children is embedded in local safeguarding arrangements at the individual and strategic levels? Does the approach enable children from diverse backgrounds and with different needs to share their voice?
13. What evidence is there that the child is at the centre of local safeguarding arrangements?
14. Who are the most vulnerable children in the local area? What are their needs and how well are they met?
15. To what extent are local organisations, agencies and practitioners working together in an effective way?
16. How effective are local safeguarding services in working with these groups?
17. Is there evidence of strong leadership of local safeguarding arrangements from:
  - Local authority members?
  - The Director of Children's Services?
  - The Lead Member for Children's Services?
  - The Clinical Commissioning Group?
  - The Police?

---

**18.** How robust and systematic is the Local Authority's approach to assessments of need? Do assessments routinely meet the quality standards set out by the latest statutory guidance including:

- Taking a systematic and evidence based approach?
- Using a child centred approach?
- Focusing on action and outcomes for the child?
- Taking an integrated approach across a variety of services and areas of need?
- Ensuring that assessments are a continuing process rather than a one-off event?
- Focusing on the child's developmental needs and whether they are suffering or likely to suffer significant harm?
- Considering parents and carers capacities?
- Looking at the impact of wider family, community and environmental circumstances?

**19.** How effective are local protocols for sharing appropriate information between practitioners and organisations?

**20.** How effective are local safeguarding services in establishing a partnership approach with parents? How are the needs of vulnerable parents taken into account through services and support to enable them to participate effectively in assessments?

**21.** How well do local services adhere to timelines for assessment and intervention? What is the local performance data?

